

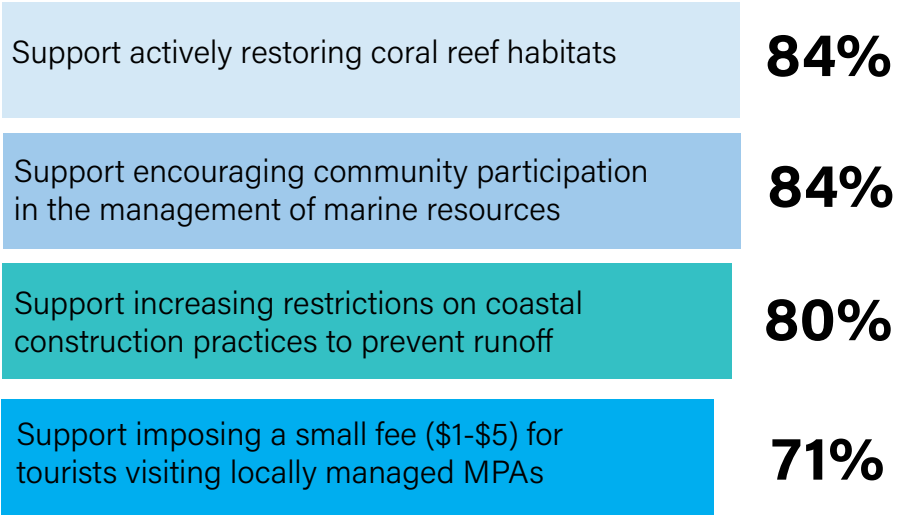
CONNECTIONS BETWEEN CORAL REEFS & COASTAL COMMUNITIES

NOAA's Coral Reef Conservation Program monitors the biological, socioeconomic, and climate conditions of US coral reefs and communities through the National Coral Reef Monitoring Program (NCRMP). The Socioeconomic Component of the NCRMP collects and monitors human use of coral reef resources, knowledge, attitudes, and perceptions of coral reefs and coral reef management, and demographics of the populations living in coral reef areas. The takeaways below are based on resident survey results from the CNMI's second monitoring cycle.

TAKEAWAYS FROM
the Commonwealth of the
Northern Mariana Islands
(CNMI) **2024**

MANAGEMENT SUPPORT

Many residents supported management strategies to protect coral reefs.



ACTIVITY PARTICIPATION

Beach recreation



Swimming or wading



Spearfishing

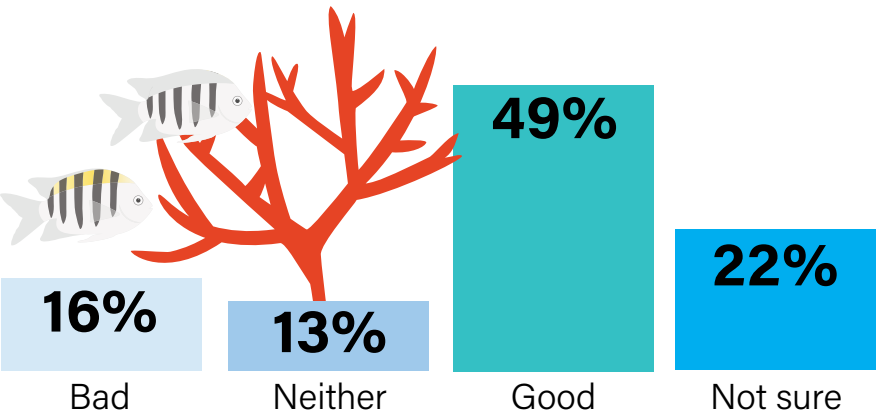


CORAL REEF IMPORTANCE

Most residents (94%) believed that coral reefs are important for protecting the CNMI from natural disasters, and most (91%) believed that coral reefs are important for the CNMI tourism-based economy.

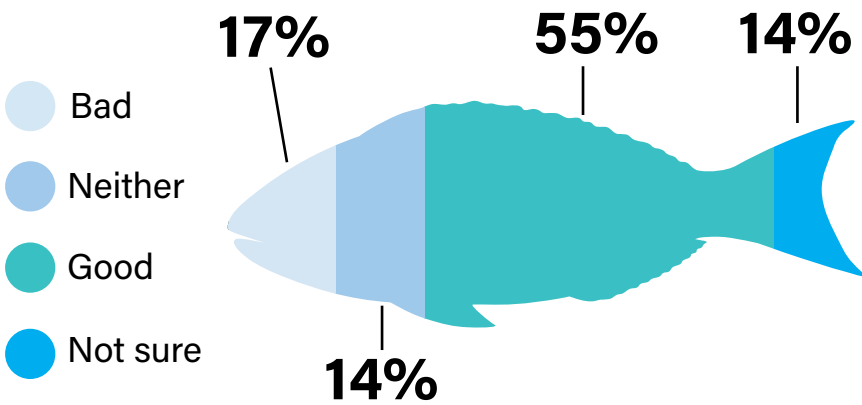
AMOUNT OF LIVE CORAL

Residents perceive the current amount of live coral is...



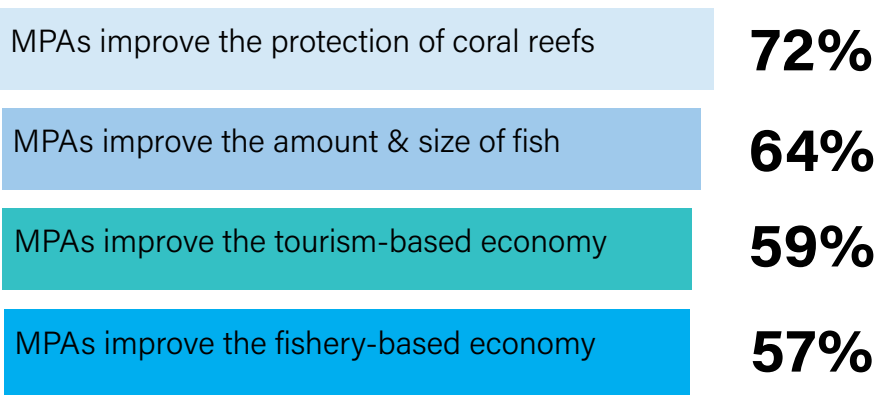
AMOUNT OF FISH

Residents perceive the current amount of fish is...



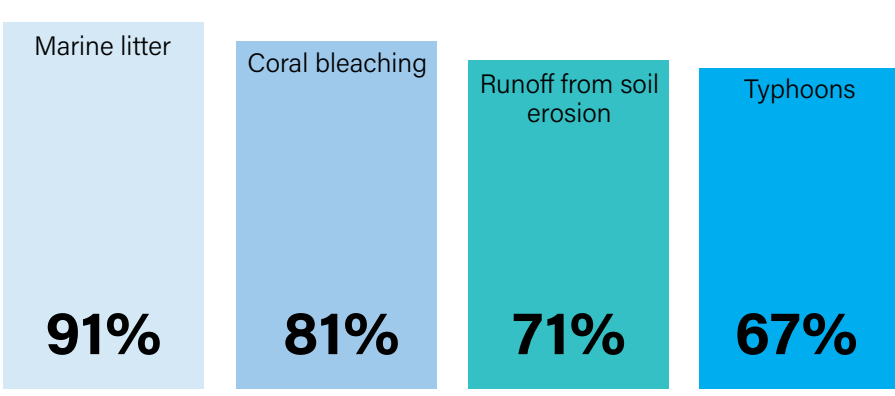
BENEFITS OF MPAs

Many residents had positive perceptions about the benefits of Marine Protected Areas (MPAs) and Preserves.



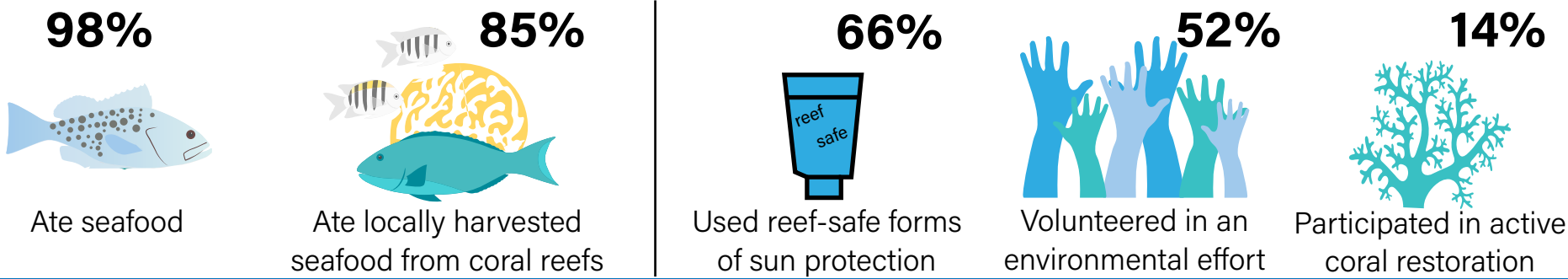
THREAT RECOGNITION

Residents recognized the following as threats to coral reefs in the CNMI.



SEAFOOD CONSUMPTION AND ENVIRONMENTAL BEHAVIORS

Residents were asked if they engaged in the following activities.



All percentages have been rounded to the nearest whole number. An in-person, household survey was conducted within a random sample of residents aged eighteen and older across the CNMI between February and March 2024. Surveys were offered in English, Chamorro, Carolinian, and Tagalog. A total of 709 surveys were completed with a response rate of 24.3%. This survey was conducted for the CNMI's second socioeconomic NCRMP monitoring cycle, and is used in conjunction with the collection of existing secondary data to monitor the socioeconomic conditions of U.S. coral jurisdictions over time.

To download the data for these surveys, visit: <https://doi.org/10.25921/1tk-t-s064>
For more information, please see the NCRMP Socioeconomic Component project page at <http://www.coris.noaa.gov/monitoring/socioeconomic.html>

