



2019 CITIZEN-CENTRIC REPORT DIVISION OF PARKS AND RECREATION

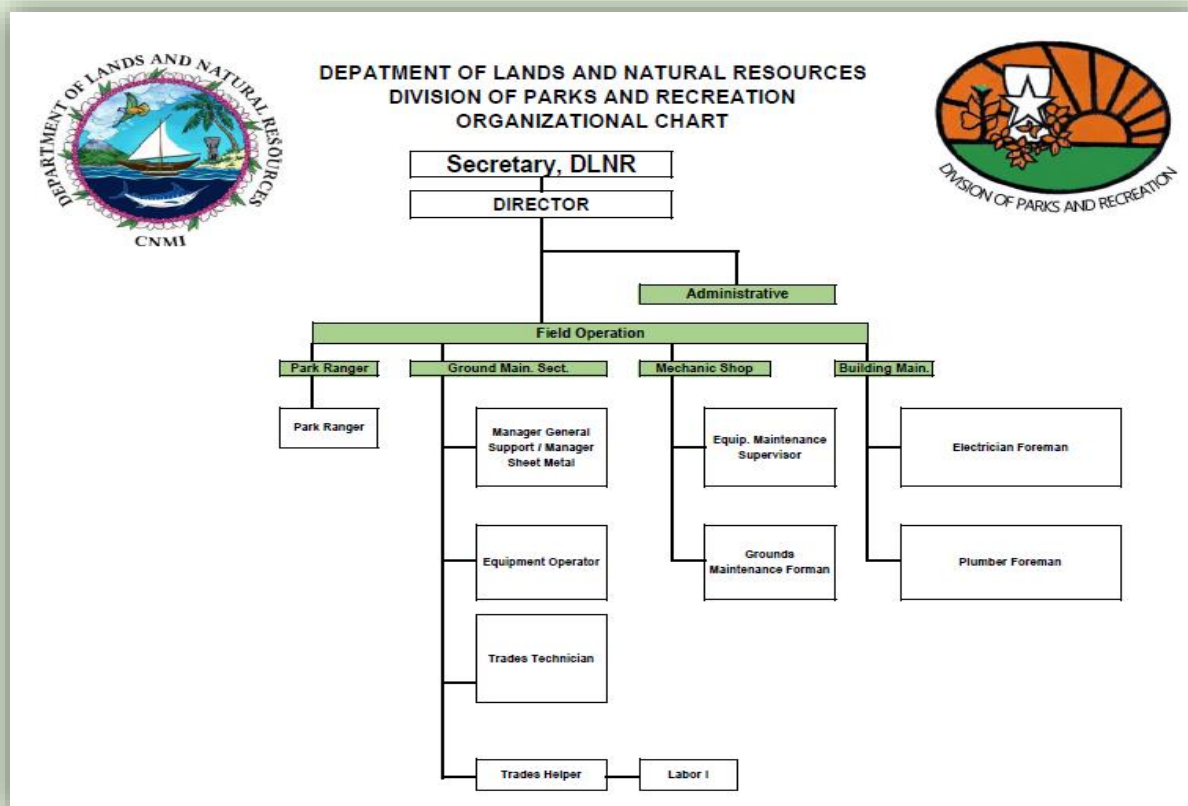
Who We Are: The Division of Parks and Recreation is under the Department of Lands and Natural Resources with mandated duties to upkeep public parks, recreational facilities and tourist sites. Division of Park and Recreation was established through the passage of Public Law 11-106, 14-27 authorizing and enabling the division to continue promoting sound management practices while complying with CNMI’s Local and Federal laws where it’s applicable. The division is additionally guided by the established and approved regulation chapter 85-50.1, to implement fee collection and enforcement throughout its identified jurisdictions

Our Vision

To avail the general public full access to enjoy nature at its best, granting opportunities to visit historical sites, structures and beaches that are significant to the Commonwealth of the Northern Mariana Islands (Saipan).

Operation Structure

- The division is staffed with 47-Employees respectfully.
- Four of these employees are under the Workforce Investment Agency (WIA) ... hired under Limited Term Appointment for 6 months only.



Strategic Goals:

To improve Live / Work / Recreation / Health / Diversity / Customer Service and Environmental Sustainability

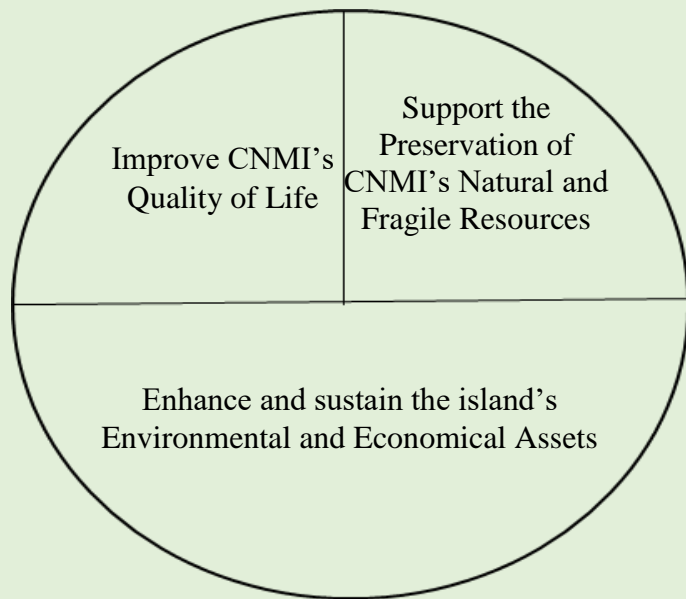


Our Mission:

To enhance the quality of life in the CNMI by providing exceptional parks and recreation experiences while preserving significant natural and cultural resources and its economic stability.

Parks & Recreation Values:

Integrity, Community, Collaboration, Safety, Leadership, Positive Attitude





OPERATION Expenses

Division's Budget and Personnel: Total of (\$ 1,096,203)

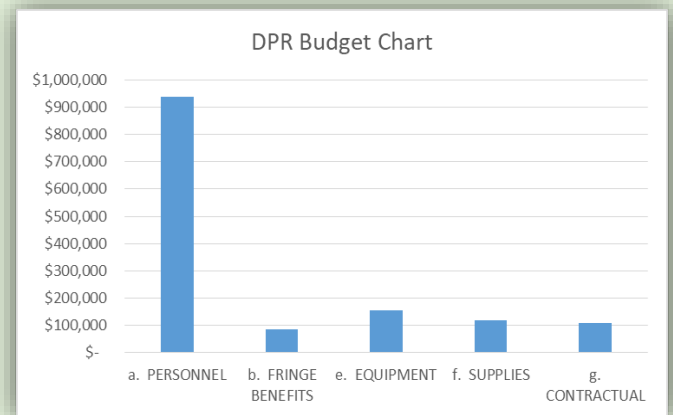
- Personnel: \$ 991,152
- Operation: \$ 105,051

Federal Grant within this requested Year.

- (Not applicable within this reporting period)

Quarterly Expenses for Utilities: (\$3,500)

- Total Expenses to date: (\$10,500)



Quarterly billing for Communication: (\$1,046)

- Expenses to Date: (\$9,140)

Quarterly billing for Fuel: (\$4,084)

- Expenses to Date: (\$12,253)

Quarterly billing for Operation and Repairs / Maintenance: (\$2,544)

- Expenses to Date: (\$7,633)

Division operational Vehicles: 18 vehicles under Parks

- 4 inoperative pending to be surveyed

Division's Operational Equipments, Machinery, and Tools:

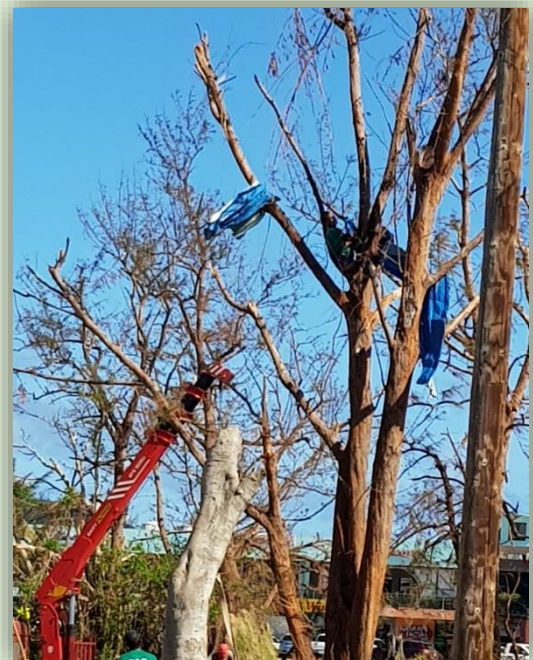
- All small engines are working

Operational furniture, Fixtures, and other capital Items:

- Destroyed by Super Typhoon YuTu.

Policy and Regulations:

- Chapter 85-50.1





MAJOR ACCOMPLISHMENT FOR THE DIVISION WITHIN THIS REPORTING PERIOD / FISCAL YEAR

- Created and Restructured the Organizational Chart / Functional Chart
- Developed the 5-Year Strategic Plan for Parks and Recreation
- Participated in hosting two Youth during the Youth-Take-Over-Day
- Acquired 2 new vehicles for Parks Admin and Ranger section
- Submitted the Division's Annual Budget Proposal on time
- Received 3 used vehicles for Field Operation (2 from Dept. Public Land and 1 from DCCA)
- Assisted in the Debris Cleanup caused by Super Typhoon Yutu
- Participated in the Taga Man Triathlon, and other MVA's sanctioned events
- Had 3 Park Rangers certified as Litter-Officers under the Division of Parks and Recreation
- Participated in the SCORP development (on-going)
- Continue to maintain parks jurisdiction as mandated by law (on-going)
- Assist other government agencies with their immediate repair and maintenance needs

Competing Interests:

Parks and Recreational areas have been established by constitutional mandate and public laws to ensure that prime spaces under public land were maintained for community purposes and activities. Along with such acres developed exclusively for public recreational purposes, the neighboring vicinities have increased its land value by 100%, causing developers to race and retain private acres for hotels and other developments. These sureties assures private companies the potential to expand creating a booming economy in the CNMI.



Public input and analysis also identified a number of challenges to completion of individual projects as well as general direction about where the community would like to see action. The primary challenges of CNMI faces is the financial balance of moving projects forward and committing operations and maintenance resources to sustain the division once they were built.

Building Community Support:

While state budget may appear as an obstacle to creating the community's envisioned park system, the larger issue is ongoing operation and maintenance of the park system into the future. The most sustainable source of funding for both operations and maintenance is strong community support.

This support will need to be reinforced and converted into the necessary political and financial support (including fees and taxes) to implement Future Park System Plan. The specifics of how these strategies will be applied and the value in the CNMI will depend greatly on the projects selected.